

N.E. 1/4 OF N.W. 1/4 OF N.E. 1/4 OF  
SECTION 23, T.5N., R.2W., S.L.B. & M.

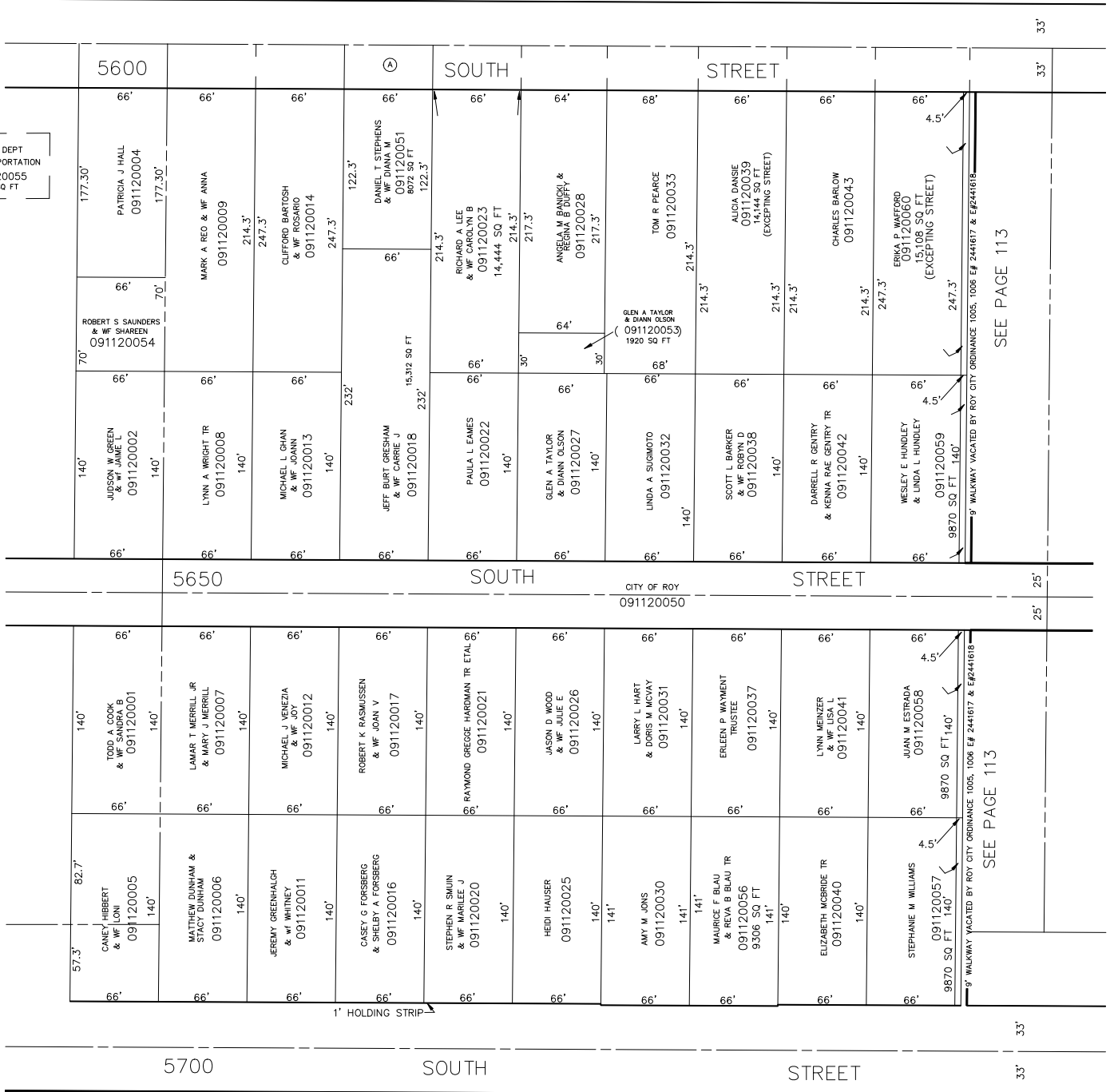
IN ROY CITY  
SCALE 1" = 60'

TAXING UNIT: 41

SEE PAGE 1

UTAH DEPT  
OF TRANSPORTATION  
091120055  
2178 SQ FT

SEE PAGE 94



SEE PAGE 113

SEE PAGE 113

SEE PAGE 96